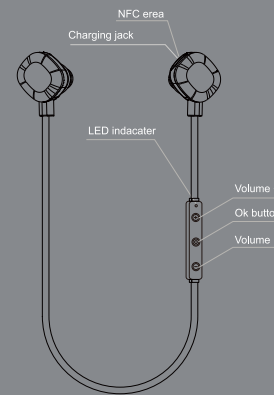


## PRODUCT ILLUSTRATION

When the headset and bluetooth device has not connected successfully or did not connect. 15 minutes later, the earphone will be off automatically by default to save power.



EN

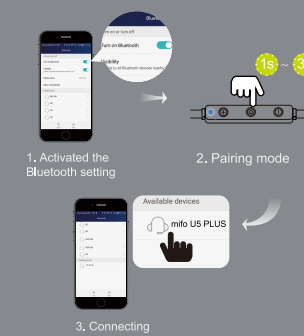
## PRODUCT SPECIFICATIONS

Bluetooth Version 4.1  
CSR8640 chipset  
With NFC  
Micro USB charging port  
Support HFP, HSP and A2DP, AVRCP  
Operating Range: Up to 30 feet (10 meters)  
2pcs 60mAh Polymer lithium battery, total 120mAh  
Talk time: 6-8 hours  
Music play time: 6-8 hours  
Standby time: 240 hours  
Charging time: about 1-2 hours  
iPhone battery indication  
CVC echo and noise cancellation  
Support voice prompt for MMI:  
Power on/connected/battery low/Power off/disconnect

EN

## PAIRING 1

CONNECT WITH ONE BLUETOOTH DEVICES  
(phones, tablet, PC with bluetooth and so on)



NOTICE: If your mobile phone bluetooth version is below version 2.1, then you need to enter password "0000".  
IMPORTANT: If the pairing can't be completed within 90 seconds while the pairing mode is activated, it means the pairing is unsuccessful, please repeat pairing operation step to pair the headset with the bluetooth device again.  
U5 Plus supports: Connecting with two bluetooth devices at the same time.

EN

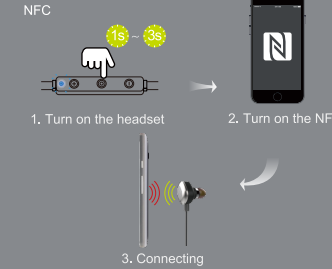
## PAIRING 2

CONNECT WITH TWO BLUETOOTH DEVICES  
(phones, tablet, PC with bluetooth and so on)



EN

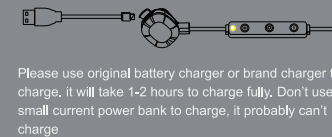
## PAIRING 3



## BASIC OPERATIONS

CHARGING Connect by USB cable

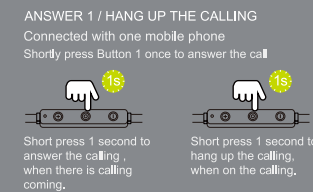
- Charging
- Fully charged



Please use original battery charger or brand charger to charge, it will take 1-2 hours to charge fully. Don't use small current power bank to charge, it probably can't charge

EN

## BUTTON FUNCTION



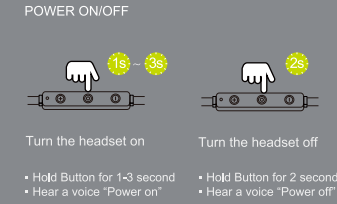
EN

## BUTTON FUNCTION



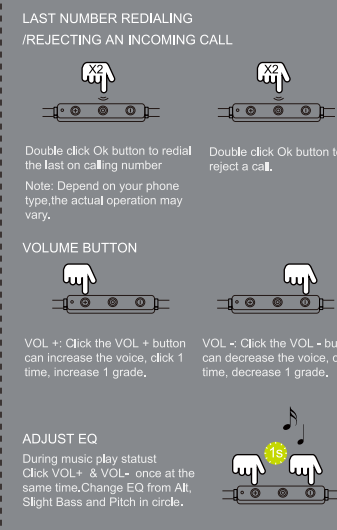
EN

## BUTTON FUNCTION



EN

## BUTTON FUNCTION



EN

## FREQUENTLY ASKED QUESTIONS

Why bluetooth headset can not turn on?  
1. You can check if headphone is with power, if not, please charge it fully before turning it on.  
2. Please Hold "Ok button" for 3 seconds.  
Why bluetooth headset signal is not stable?  
1. Restart the bluetooth headset.  
2. Please kindly check the compatibility of the mobile phone and calling communication quality.  
3. Then confirm if the distance between headphone and phone is too far or there are interference surrounded. If too far or there are interference, the signal will be not stable.  
4. Please don't stay in the signal reflective environment.  
Why the bluetooth headphone's noise is so big?  
1. Please kindly check the mobile phone's noise suppression function.  
2. Please kindly check if the bluetooth headphone and mobile phones distance is out of 10 Meters.  
3. Please kindly confirm if you are in an electromagnetic radiation surrounding environment.

EN

Why bluetooth headset can't hear voice?  
1. Please kindly check if the bluetooth headset is on mute.  
2. Please check if bluetooth headphone and phone is connected well.  
3. Then confirm if the distance between headphone and phone is too far or there are interference surrounded.

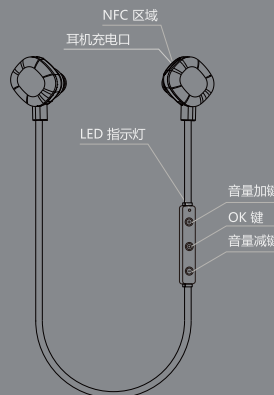
DESIGNED AND MADE BY  
Mifo Technology Co., Ltd.

Tel: +86-755-29708899  
Fax: +86-755-29708989  
Email: mifo@mifo.hk  
www.mifo.hk

PN: U5PLUS002

## 产品说明图

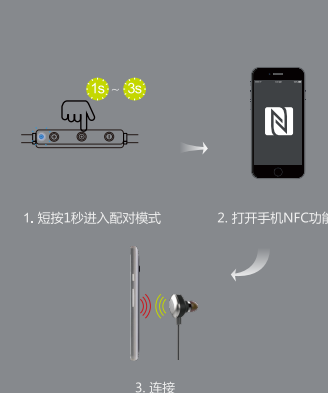
耳机未和手机等设备连接状态下,系统默认15分钟后会自动关机以节约电量。



CH

## 配对

① NFC快速配对



CH

## 配对

② 仅与一台手机, 平板电脑, 台式电脑, 笔记本等带蓝牙的设备配对



提示:  
1. 已配对的机器,重新开机或在可搜索范围内,可自动回连接,不能连接时,点按开机键或手机打开蓝牙界面,点击配对名称可以回连  
2. 如果配对不能在15分钟内完成,耳机将自动关机,就表明配对失败,请再根据以上4个步骤重新配对  
3. 配对不成功,请删除手机上的配对名,重复配对,直到配对成功

CH

## 配对

③ 与两台手机, 平板电脑, 台式电脑, 笔记本等带蓝牙的设备配对



CH

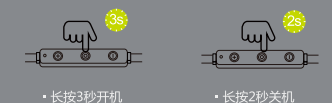
## 充电方式

- LED指示灯显示状态
- 充电中 (白色常亮)
- 电池充满 (灭灯)



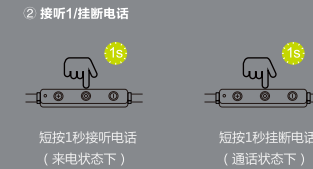
## 按钮功能

① 开/关机  
开机即进入配对模式



CH

## 按钮功能



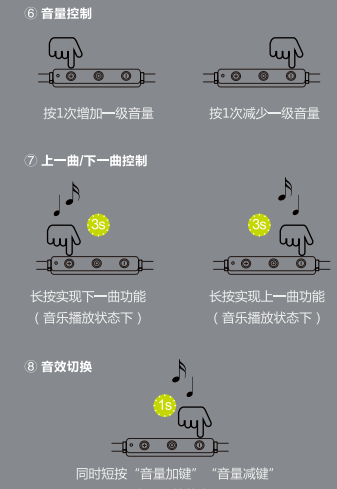
CH

## 按钮功能



CH

## 按钮功能



CH

## 常见问题

蓝牙耳机不开机?  
①. 需长按OK键1秒钟左右才会开机;  
②. 检查蓝牙耳机是否没电, 需进行充电。  
蓝牙耳机信号不稳定?  
①. 重新启动蓝牙耳机;  
②. 查看手机的兼容性及手机通话质量;  
③. 确认是否距离过远或者周边环境有干扰;  
④. 不要停留在信号反射的环境中。  
蓝牙耳机噪音过大?  
①. 查看手机的抑噪控制;  
②. 确认蓝牙是否与手机距离过远;  
③. 确认周边环境是否有电磁辐射。  
蓝牙耳机听不到声音?  
①. 检查耳机音量是否调为静音;  
②. 检查蓝牙耳机是否与手机连接;  
③. 检查蓝牙耳机是否与手机距离过远或周边有干扰体。

CH

## 温馨提示

● 本机充电时请注意使用原装充电器或电脑端口充电, 切不可使用廉价劣质的充电器。  
● 产品送保前, 请自行保存好您的资料, 以免丢失。  
● 如果产品发生故障, 我们将严格按照国家规定以及我们力所能及的服务为您解决问题, 但我们可能不会为因使用产品而导致的财产损害以及经济损失承担相关法律责任。  
● 蓝牙产品均有使用环境以及连接距离的问题, 请您勿在大电磁干扰和辐射的环境中使用。  
● 蓝牙耳机内部有精密电路, 水或者震动都会损坏产品, 请不要将蓝牙耳机置于水中或者摔打, 这些均会造成产品损坏。  
● 如果您的蓝牙耳机长时间不使用, 请约30天充一次电, 以防止因缺电而造成的无法启动。  
● 我们可能在未事先通知您的情况下, 对于此产品进行一次软件或者硬件以及外观的升级和改动, 请您以实物为准。

魔浪集团(香港)有限公司 (监制)  
服务热线400-880-7659  
服务支持: bbs.mifo.hk



您可以随时加入魔浪官方微信, 查询产品真伪!