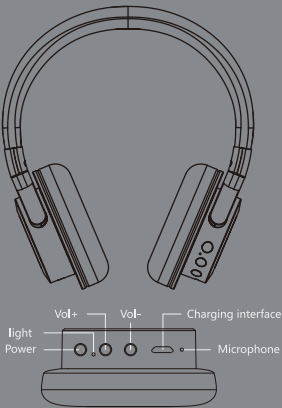


PRODUCT ILLUSTRATION

When the headset and bluetooth device has not connected successfully or did not connect, 15 minutes later, the earphone will be off automatically by default to save power.



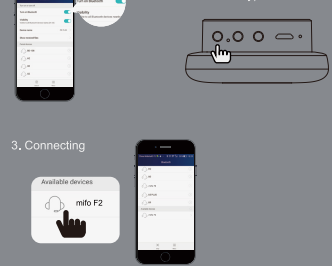
EN

PAIRING

① BLUETOOTH PAIRING/CONNECT

Pairing with 1 phone or table or PC or Notebook and so on:

1. Turn on bluetooth on your phone.
2. Turn on the headset and enter into pairing mode (Blue and light LED flash alternately).



EN

PAIRING

② BLUETOOTH PAIRING/CONNECT

Long Press power button for 2 seconds, turn on the headset and enter into pairing mode. Phone A turn on bluetooth searching button, find mifo-F2 and connect. When connect successfully, turn off the bluetooth button of phone A; Then turn on Phone B bluetooth, search mifo-F2 and connected, and click mifo-F2 to connect. Then it connected with two phones.

NOTICE: If your mobile phone bluetooth version is below version 2.1, then you need to enter password "0000".

IMPORTANT: If the pairing can't be completed within 90 seconds while the pairing mode is activated, it means the pairing is unsuccessful, please repeat Step1 to Step3 to pair the headset with the bluetooth device again.

CHARGING

LED indicator display status

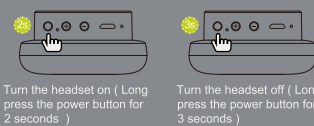
- battery low (Red led flash 1 time every 5 second)
- Charging (red light keep on)
- Full charged (blue light keep on)

Please use original Micro USB charging cable or brand charging cable to charge. It will take 1-2 hours to charge fully. Don't use small current power bank to charge, it probably can't charge.

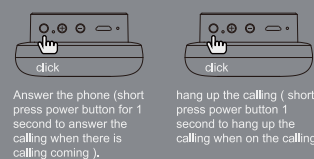
EN

BUTTON FUNCTION

① POWER ON/OFF



② ANSWER 1 / HANG UP THE CALLING



③ ANSWER 2 (keep talk with 2 person at same time)

When 1 phone is on talking with, there is calling for Phone 2. Short press power button, keep the current phone talking and answer the new calling. Under such situation, Long press power button 1 second to hang up the calling.

EN

BUTTON FUNCTION



④ ANSWER 3/REJECTING AN INCOMING CALL



EN

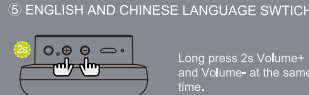
BUTTON FUNCTION

When Phone 1 is on calling, there is calling from phone 2. Double-click the power button, hang up the phone 2 to keep the phone 1 call. Click the power button, hang up the phone 1 to connect the phone 2 call.

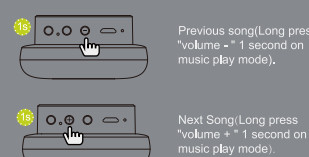


EN

BUTTON FUNCTION



⑥ NEXT/PREVIOUS SONG



⑦ INCREASE/DECREASE THE VOICE

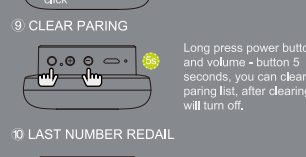
Increase Voice (short press volume + one time, will increase volume 1 grade, when the volume reach maximum, there is voice reminding (Maximum volume)). Decrease Voice (short press volume - one time, will decrease volume 1 grade, when the volume reach minimum, there is voice reminding "mute mode").

EN

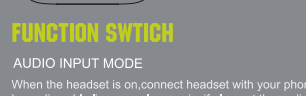
BUTTON FUNCTION



⑧ PAUSE/PLAY



⑨ CLEAR PARING



⑩ LAST NUMBER REDIAL



FUNCTION SWITCH

AUDIO INPUT MODE

When the headset is on, connect headset with your phone by audio cable line, can play music, if plug out the audio cable, you can come to bluetooth mode and waiting for pairing.

EN

FREQUENTLY ASKED QUESTIONS

Why bluetooth headset can not turn on?

1. You can check if headphone is with power, if not, please charge it fully before turning it on.
2. Please Hold "Power button" for 2 seconds.

Why bluetooth headset signal is not stable?

1. Restart the bluetooth headset.
2. Please kindly check the compatibility of the mobile phone and calling communication quality.
3. Then confirm if the distance between headphone and phone is too far or there are interference surrounded. If too far or there are interference, the signal will be not stable.
4. Please don't stay in the signal reflective environment.

Why the bluetooth headphone's noise is so big?

1. Please kindly check the mobile phone's noise suppression function.
2. Please kindly check if the bluetooth headphone and mobile phones distance is out of 10 Meters.
3. Please kindly confirm if you are in an electromagnetic radiation surrounding environment.

EN

Why bluetooth headset can't hear voice?

1. Please kindly check if the bluetooth headset is on mute
2. Please check if bluetooth headphone and phone is connected well.
3. Then confirm if the distance between headphone and phone is too far or there are interference surrounded.

EN

MAKE
IT FULLY OPTIMAL

DESIGNED AND MADE BY

Mifo Technology Co., Ltd

Tel: +86-755-29708899
Fax: +86-755-29708888
Email: mifo@mifo.hk
www.mifo.hk

PN: F2S002

产品说明图

耳机和手机等设备连接状态下,系统默认15分钟后会自动关机,以节约电量。



CH

蓝牙配对

① 仅与一台手机、平板电脑、台式电脑、笔记本等蓝牙的设备配对



CH

蓝牙配对

提示:

1. 已配对的机器,重新开机或在可搜索范围内,可自动回连接,不能连接时,点按开机键或手机打开蓝牙界面,点击配对名称可以回连。
2. 如果配对不能在15分钟内完成,耳机将自动关机,就表明配对失败,请再根据以上步骤重新配对。
3. 配对不成功,请删除手机上的配对名,重复配对,直到配对成功。

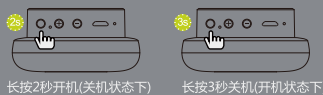
充电方式

- LED指示灯显示状态
- 电量低 (每隔5秒闪1下)
- 充电中 (红灯常亮)
- 电池充满 (蓝灯常亮)

本机须使用原装充电线进行充电, MICRO USB线连接 5V(1A-2A)电源适配器, 5V(1A-2A)车载充电头, 推荐使用3A以下的电源适配器给耳机进行充电, 蓝牙耳机充满电需约2小时左右, 不能使用小于100毫安的电源适配器、车载充电头, 这样会导致不能给耳机充电。

按钮功能

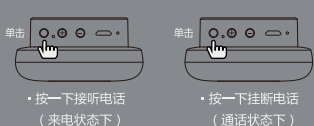
① 开关机



CH

按钮功能

② 接听1/挂断电话



③ 接听2 (三方通话)

当电话1通话,电话2来电,单击电源键,保持电话1通话并接听电话2,在三方通话状态下,长按电源键1秒挂断电话1.



CH

按钮功能

④ 接听3/拒接电话

当一个手机来电,双击电源键拒接来电。



CH

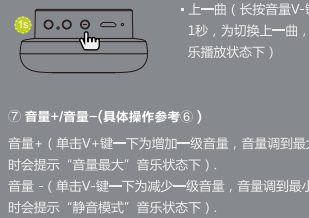
按钮功能

⑤ 中英文语言切换



CH

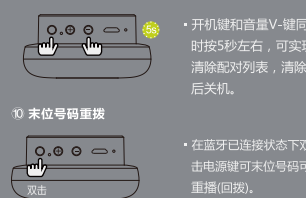
按钮功能



CH

按钮功能

⑨ 清除配对



功能切换

音频输入模式
开机任何状态下,直接插入已输出音乐的音频线,可播放音乐 (拔出音频线时,可直接回到蓝牙配对模式,等待蓝牙配对)。

CH

常见问题

蓝牙耳机不开机?

- ①. 需长按电源键2秒钟左右才会开机;
- ②. 检查蓝牙耳机是否没电,需进行充电。

蓝牙耳机信号不稳定?

- ①. 重新启动蓝牙耳机;
- ②. 查看手机的兼容性 & 手机通话质量;
- ③. 确认是否距离过远或者周边环境有干扰;
- ④. 不要停留在信号反射的环境中。

蓝牙耳机噪音过大?

- ①. 查看手机的抑噪控制;
- ②. 确认蓝牙是否与手机距离过远;
- ③. 确认周边环境是否有电磁辐射。

蓝牙耳机听不到声音?

- ①. 检查耳机音量是否调为静音;
- ②. 检查蓝牙耳机是否与手机连接;
- ③. 检查蓝牙耳机是否与手机距离过远或周边有干扰体。

CH

温馨提示

- 本机充电时请注意使用原装充电器或电脑端口充电, 切不可使用廉价劣质的充电器。
- 产品送保前, 请自行保存好您的资料, 以免丢失。
- 如果产品发生故障, 我们将严格按照国家规定以及我们力所能及的服务为您解答问题, 但我们可能不会为因使用产品而导致的财产损害以及经济损失承担相关法律责任。
- 蓝牙产品均有使用环境以及连接距离的问题, 请您勿在大电磁干扰和辐射的环境中使用。
- 蓝牙耳机内部有精密电路, 水或者震动都会损坏产品, 请不要将蓝牙耳机置于水中或者摔打, 这些均会造成产品损坏。
- 如果您的蓝牙耳机长时间不使用, 请约30天充一次电, 以防止因缺电而造成的无法启动。
- 我们可能在未事先通知您的情况下, 对于此产品进行一次软件或者硬件以及外观的升级和改动, 请您以实物为准。

CH



您可以随时加入米浪官方微博, 查询产品真伪!

米浪集团(香港)有限公司 (总制)
服务热线: 400-880-7659
服务支持: bbs.mifo.hk